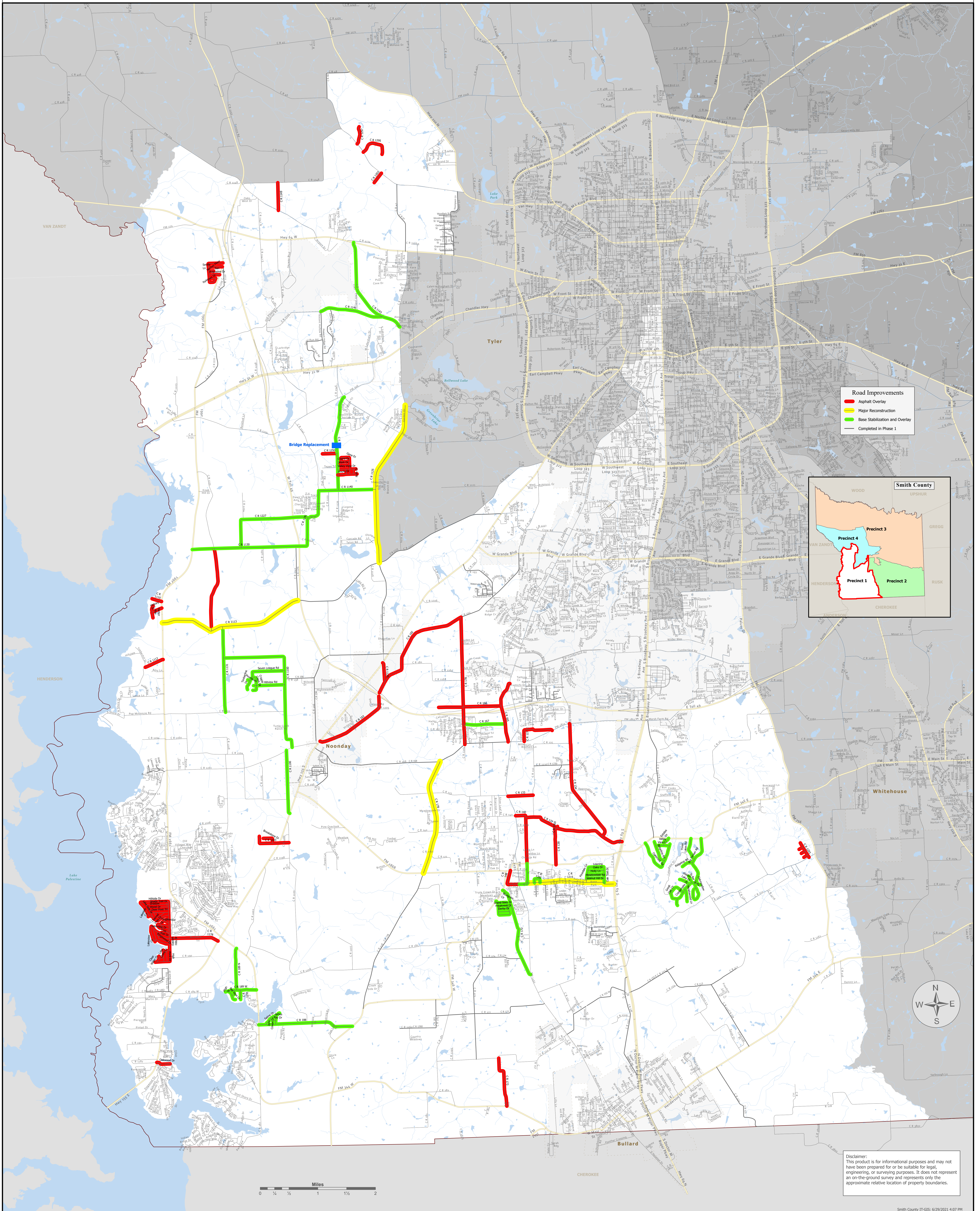
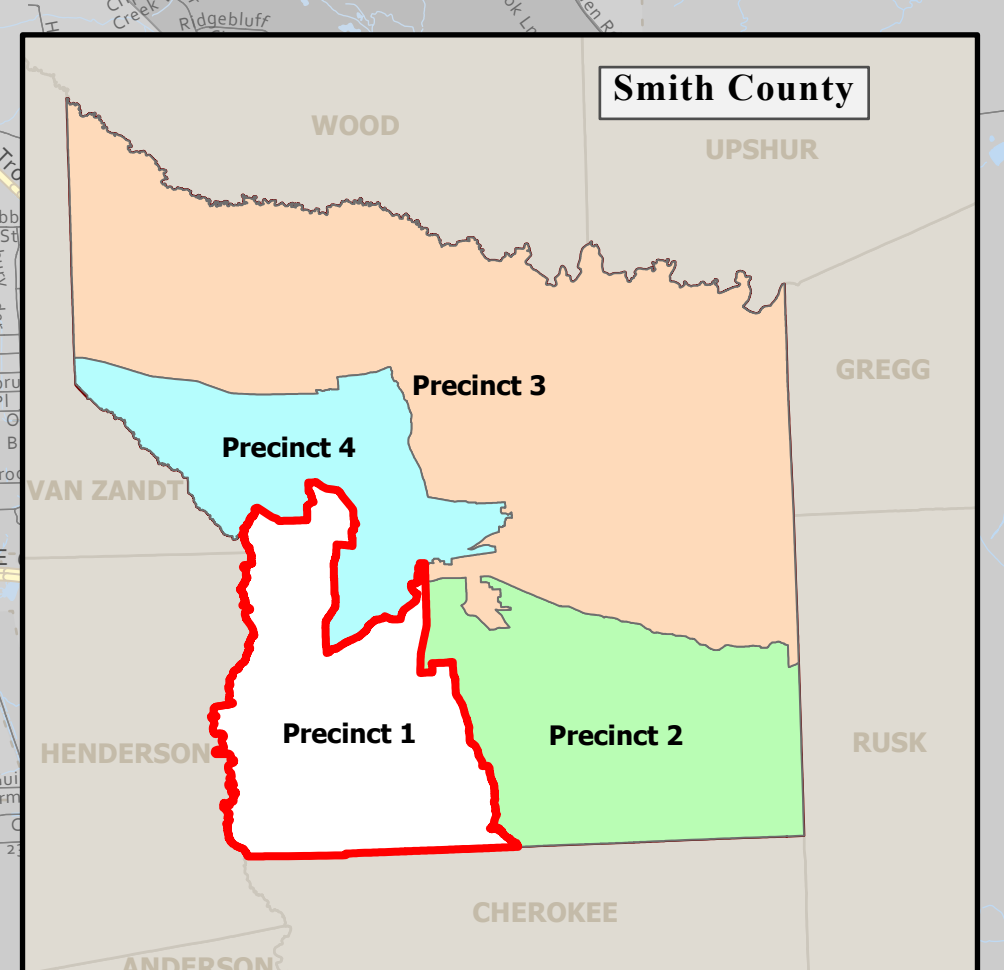


The County of Smith Texas Precinct 1 - Phase 2



Road Improvements

- █ Asphalt Overlay
- █ Major Reconstruction
- █ Base Stabilization and Overlay
- █ Completed in Phase 1



Disclaimer:
This product is for informational purposes and may not have been prepared for or be suitable for legal, engineering, or surveying purposes. It does not represent an on-the-ground survey and represents only the approximate relative location of property boundaries.