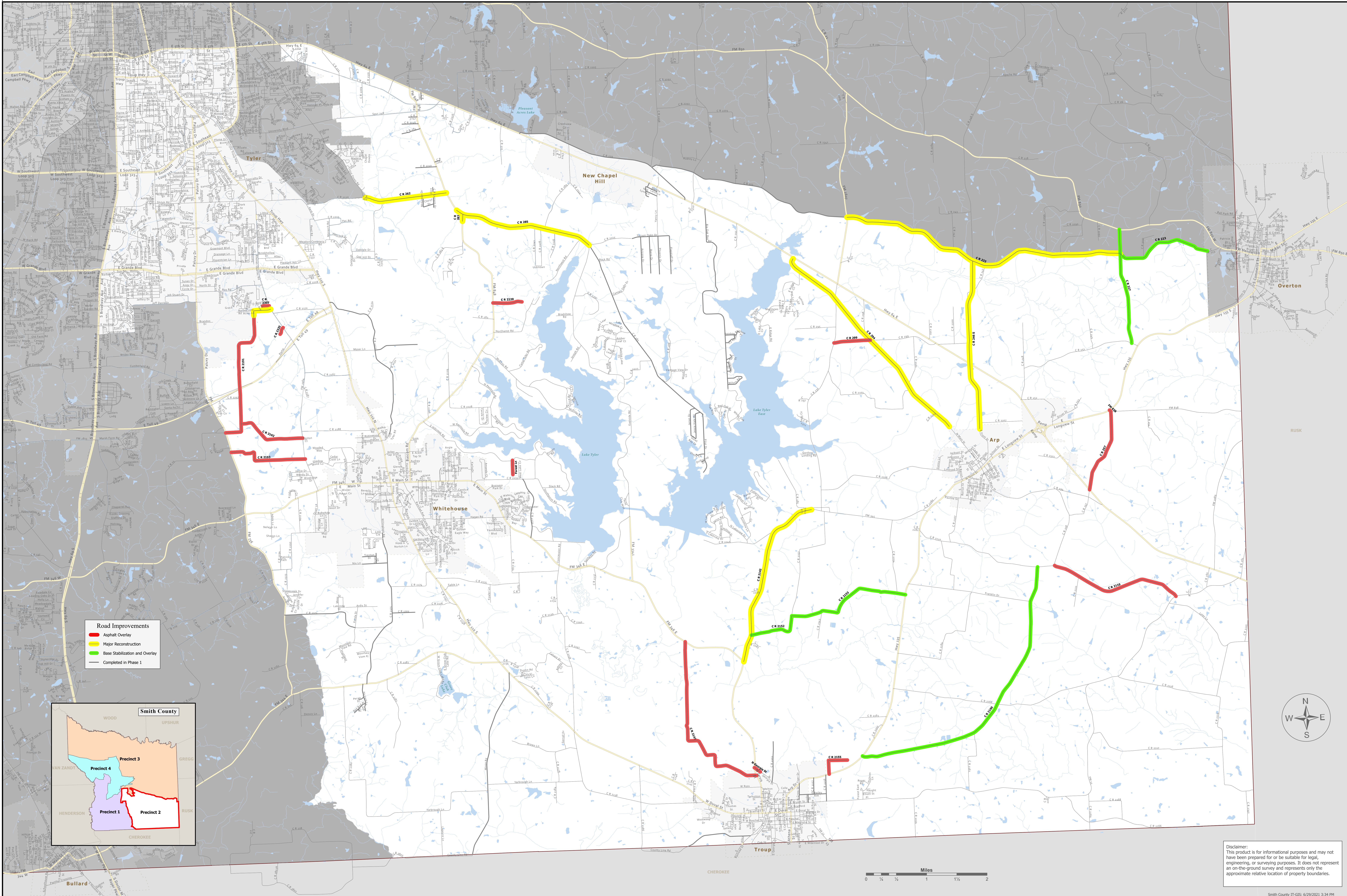


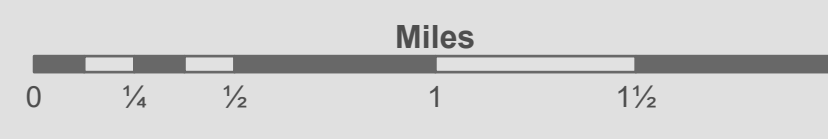
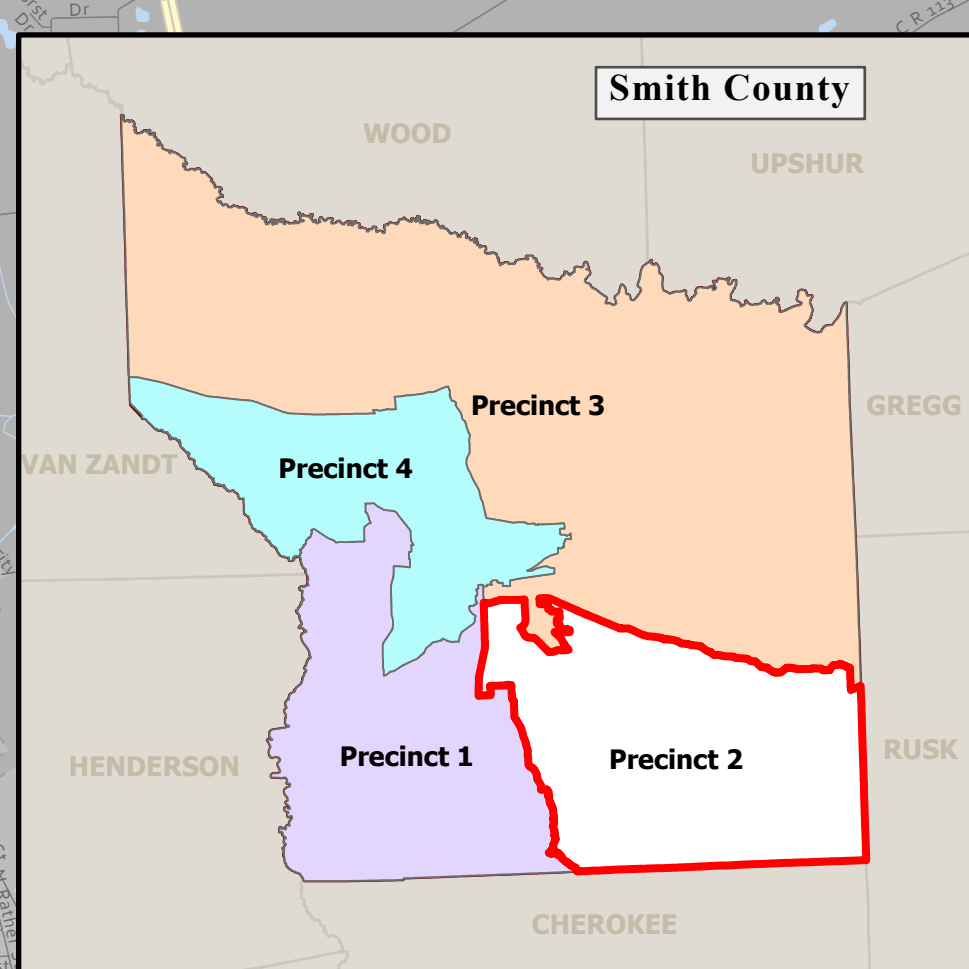


Smith County of Texas

# The County of Smith Texas Precinct 2 - Phase 2



- Road Improvements**
- Asphalt Overlay
  - Major Reconstruction
  - Base Stabilization and Overlay
  - Completed in Phase 1



Disclaimer: This product is for informational purposes and may not have been prepared for or be suitable for legal, engineering, or surveying purposes. It does not represent an on-the-ground survey and represents only the approximate relative location of property boundaries.